

# SEMI-AUTOMATIC

# TRAFFIC BOLLARDS

gas spring



RELIABLE AND COST-EFFECTIVE SOLUTION TO  
PROVIDE 100% SECURITY OF YOUR TERRITORY

TiSO semi-automatic bollards are a perfect solution for effective vehicle access control under the circumstances of unavailable power supply. Semi-automatic bollards have gas spring mechanism which is locked at down position and rise rapidly when released. Being complete and independent solution, semi-automatic bollards require manual impact for driveway opening or closing. Regularly this function is provided by staff involved to access control management. The range of semi-automatic bollards is specified by tube's material, diameter, and rising height of blocking segment.

### Installation areas

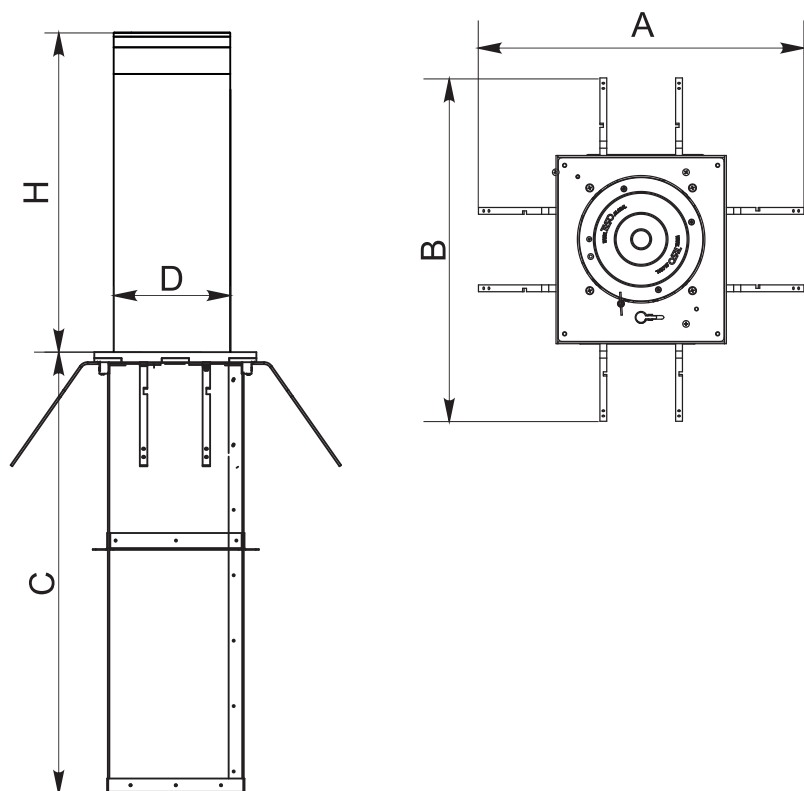
- Governmental Institutions
- Military Bases
- Nuclear Power Plants
- Production sites (Industrial Plants)
- Commercial areas
- Financial institutions
- Airport Premises
- Business (Office) Center
- Hotels
- Sport Complexes
- Recreation areas
- Urban areas
- Education Institutions



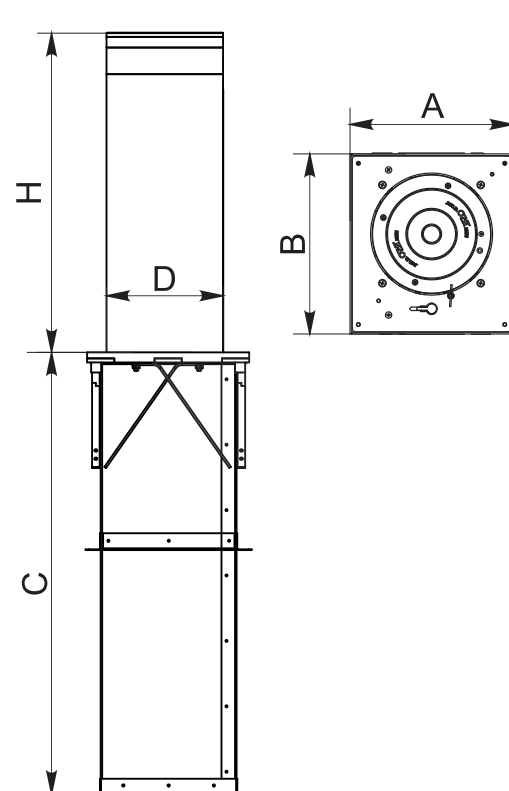
www.tiso.global  
+380 (44) 291-21-11  
e-mail: sales@tiso.global



Overall dimensions of the bollard with raised foundation anchors



Overall dimensions of the bollard with lowered foundation anchors

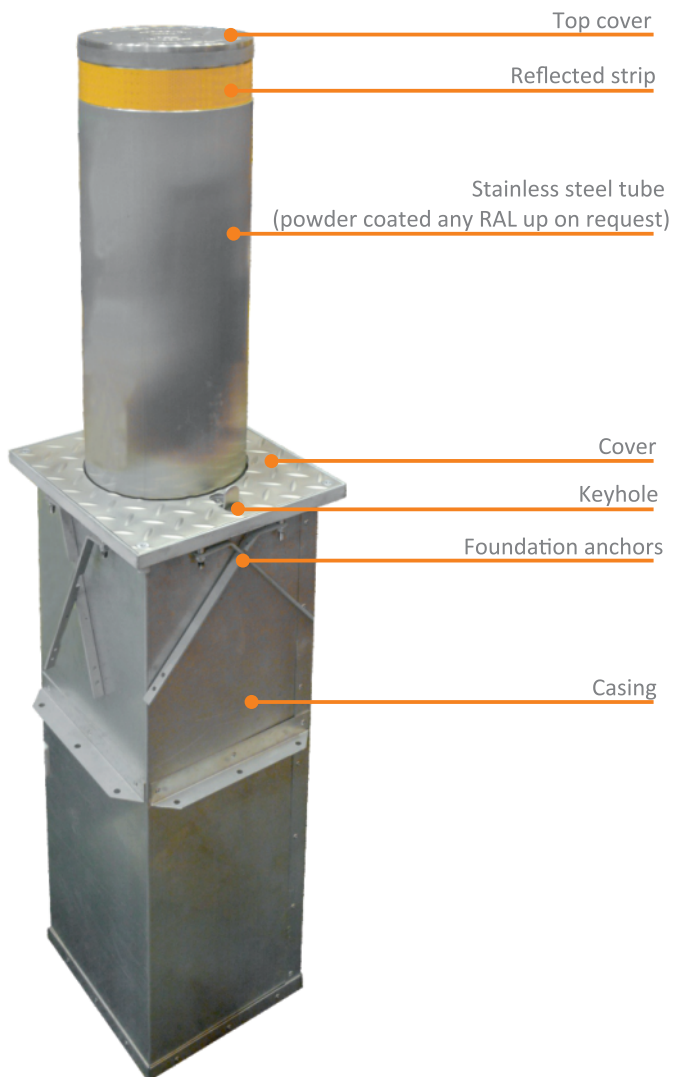


**TECHNICAL SPECS\*:**

Model	RB343-60	RB343-61	RB343-63	RB343-64
Drive	Gas-spring mechanism			
Tube diameter (D), mm	220	273	220	273
Tube height (H), mm	600		800	
Foundation case dimensions (AxBxC), mm				
• with lowered anchors	330x380x878	374x413x878	330x380x1078	374x413x1078
• with raised anchors	671x721x878	715x754x878	671x721x1078	715x754x1078
Operation temperatures, °C	-40 / +60			
Tube material	Brushed stainless steel AISI 304 Brushed stainless steel AISI 316 Galvanized and powder coated tube (any RAL up on request)			

\*technical data is subject to change without notice





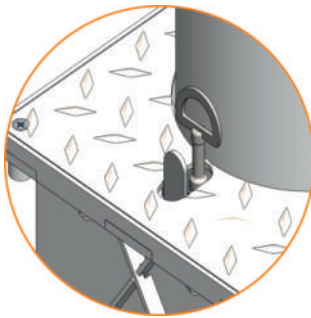
### Standard kit

- Reflective tape
- Key
- Bollard in assembly
- Installation casing

### Options

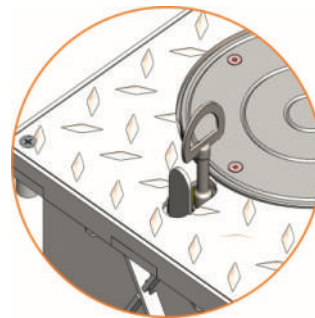
- LED indication
- Sound signal
- Any RAL color
- Additional keys
- Traffic lights

#### Opening of access



1. Turn the key to unlock.
2. Push the bollard with a foot to retract it in the casing and automatically lock in the down position.

#### Closing of access



1. Turn the key to back.
2. The bollard raises and automatically lock in the up position.